

# Community Wish List

Fall 2024



**JEWISH  
COMMUNITY  
FOUNDATION**  
OF GREATER HARTFORD



This newsletter highlights activities you can partially or fully fund to keep our community strong, vibrant and resilient. Thank you for your generous support!

## HUMAN SERVICES

### Supplies for Hot Meals

Jewish Family Services (JFS)

JFS is launching a new program that delivers fresh kosher meals to older adults, which are flash frozen and ready for recipients to reheat in their homes. Your grant will help pay for freezer bags and other items to help facilitate the program launch.

**\$3,000**

### Sponsor Hot Kosher Meals for Low-Income Holocaust Survivors and Seniors

Jewish Family Services

Your grant to JFS will help cover the costs of its new hot kosher meals program for low-income Holocaust survivors and seniors.

**\$3,000**



## OUTREACH

### Accessible Outdoor Furniture

UConn Hillel

UConn Hillel is expanding its outdoor space for student programming and would like to ensure that seating options are accessible to all members of the community. Your grant will help UConn Hillel purchase weather resistant wheelchair accessible picnic tables and raised gardening beds.

**\$3,000**

### Dogs and Donuts

UConn Hillel

Given the stress our students are experiencing, especially post Oct. 7, UConn would like to bring in its therapy dogs on a weekly basis and provide donuts (and other treats) for the community. Your grant will be used to provide food every week for this program in 2025.

**\$1,000**

### Portrait Identity Project

University of Hartford Hillel

Please consider a grant to the Portrait Identity Project, a social documentary project that expands and diversifies the narrative of what it “looks like” to be Jewish. Stories are paired with professional portraits to encourage viewers to listen and learn from students as they self-reflect on the intersection of their identities. Photos will display in the new Zachs Hillel Center.

**\$3,000**

## COMMUNITY BUILDING/SOCIAL ACTION

### Trunks of Hope

Voices of Hope (VOH)

VOH has trunks filled with artifacts to memorialize those lost in the Holocaust. Students will analyze these artifacts and explore what they reveal about the experiences of those eyewitnesses. Your grant will support VOH's travelling exhibit, to use in conjunction with its newly collected testimony from Hartford Holocaust survivors.

**\$3,000**

### Addressing Post 10/7 Holocaust Distortion

Voices of Hope

VOH seeks your help to create programs for varied audiences to address the dramatic increase in misinformation and disinformation surrounding the Holocaust and genocide since 10/7. Please consider a grant for this initiative, which is needed now more than ever.

**\$3,000**

## EDUCATION

### Buddy Benches

Solomon Schechter Day School

Schechter wants to purchase Buddy Benches to replace current aging playground benches. These benches will provide a dedicated spot for kids looking for a buddy to talk or play with. Please join Schechter in fostering friendship and inclusivity on Schechter's playground with a grant for Buddy Benches.

**\$3,000**



### Social-Emotional and Health Curriculums

Solomon Schechter Day School

Schechter looks forward to launching updated Social-Emotional and Health Curriculums grounded in the latest research and advancements that will empower students with essential life skills. Your grant will help the school foster both personal and academic growth for the next generation of Jewish leaders in our community!

**\$3,000**

### Fellowship Program

JTConnect

In partnership with Hillel at the University of Hartford, JTConnect has developed a Fellowship program to provide learning and skills-building opportunities that are critical for students at this time of heightened antisemitism on campus. The Fellowship is designed to be a connector with our students, helping to foster student leadership and peer-to-peer engagement. JTConnect received a three-year grant from JCF to pilot this program and is seeking your grants to bolster this exciting initiative.

**\$1,500**

### Social Action Programs

JTConnect

Help expand annual community-wide social action programs and build belonging among Jewish teens by recommending a grant to JTConnect. The programs are steeped in Jewish values and give more than 100 students every year a chance to learn in-depth about the needs in the local community.

**\$2,000**

### Library Books

New England Jewish Academy (NEJA)

NEJA would like to expand its library collection for readers, grades 3-6. Please consider a grant to buy more books and encourage the joy of reading, which is important during this pivotal time in a child's education.

**\$2,000**

## EDUCATION

---

### Interactive Classrooms

New England Jewish Academy

NEJA's classrooms have smart technology (smart boards, projectors, etc.), but interactive touchscreens are more adaptive to Google classrooms and easier to maintain. Please consider recommending a grant for interactive touchscreens, which would be an invaluable upgrade to NEJA's existing system.

**\$3,000**

## ARTS & CULTURE

---

### Transcribe Voices from the Past

Jewish Historical Society

Support a one-year subscription to an automatic transcription service, which will allow the JHS to create transcripts for its unique oral history interviews and work with a team of volunteers to create final versions to share with the public online.

**\$750**

### Help Us Tell Our Story

Jewish Historical Society

Your grant will defray the cost of creating a short introductory video highlighting how the Jewish Historical Society provides a sense of rooted community to the region.

**\$500**

### Women's Seder

Mandell Jewish Community Center

After a 7-year hiatus, the Mandell JCC believes a Women's Seder will bring our community together in an inspirational and empowering evening. Your grant will help fund the return of this event! Michelle Citrin will once again join us to lead the musical portion of the seder along with local female Rabbis and Cantors on March 27, 2025.

**\$3,000**



### Jewish Book Festival

Mandell Jewish Community Center

The Mandell JCC is revitalizing its popular Book Festival and enhancing events with musicians, food demonstrations, and interesting moderators. These authors are chosen for the insight they offer into the Jewish world and Jewish life. Your grant will support these enhancements and attract more people to attend the Festival.

**\$3,000**

## SENIORS

---

### Safe and Effective Activities for Geriatric Patients

Hebrew Senior Care

Hebrew Senior Care's Occupational Therapists (OT) provide effective/safe activities as part of treatment plans. The OTs are requesting two wireless headphones; games for gross/fine motor skills; bird houses to assemble and paint; two waterproof speakers, assessment tools so activities are the right level of challenge, and an umbrella for the patio where patients congregate.

**\$1,200**

## SENIORS

---

### Gardening Club

Federation Homes

Residents love to garden and socialize together. Previously, Federation Homes owned raised gardening beds for residents to grow their own vegetables and herbs. Unfortunately, these beds are no longer structurally stable. Your grant will be used to purchase at least six new raised garden beds.

\$3,000

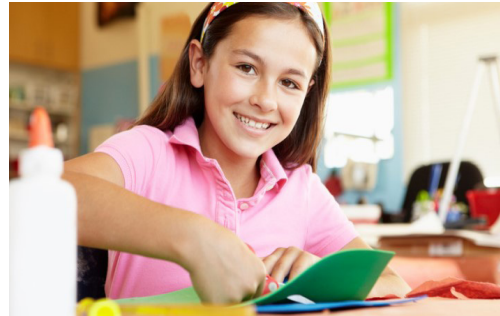
## SPECIAL EVENTS

---

### Arts and Crafts for Children and Teens

Chabad Friendship Circle

Your grant to the Chabad Friendship Circle will bring together children and teens, with and without special needs, to build confidence and creativity while doing arts and craft activities. These young artists will work alongside professional facilitators and typical teens for social connection, and to feel cared for and important.



\$2,800

### Parents Night Out

Chabad Friendship Circle

Give parents of children with special needs a chance to unwind and relax in a superb setting! With their additional workload, it is crucial that we support parents who are supporting others. Your grant will enable parents to connect with other parents who can relate to their challenges during an evening of leisure.

\$2,500

### Music Therapy

Jewish Association for Community Living

The Music Therapy program is loved by many people in the intellectual and developmental disability field. Music Therapy offers a wide range of benefits to people with disabilities, which includes lessened depression, positive emotional behavior development and social relations, and increased communication skills. Your grant will support this beneficial and popular program.

\$3,000

### Art Programming

Jewish Association for Community Living

Art is a wonderful way to express your feelings and creativity. Your grant will help pay for an art program that will allow participants an opportunity to express themselves in a way that feels most comfortable to each individual.

\$3,000

### Come and Build Jerusalem

JTConnect

A LEGO event, Come and Build Jerusalem will engage local 5th and 6th grade religious school students to celebrate Yom Ha'atzmaut and unite communities across the country and the world. Students will "build" Jerusalem with 100,000 LEGOS while celebrating Israel's independence together. Your support will allow local synagogue partners to make this event possible at a time when community building and cultivating Jewish joy has never been more important for our youth and the world at large.

\$2,000

For more information, please contact Michael Elfenbaum, Vice President of Community Engagement, [melfenbaum@jcfhartford.org](mailto:melfenbaum@jcfhartford.org) or (860) 727- 6187.